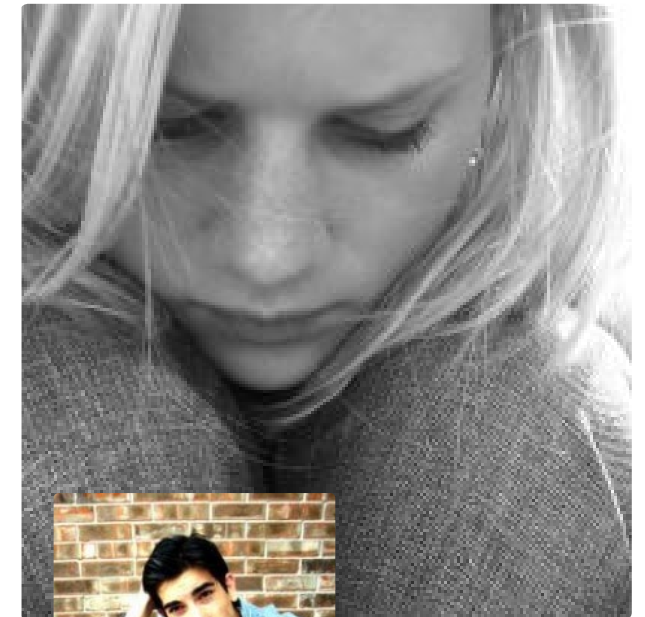


Mental Health High Prevalence Disorders

A program to provide psychological services (ATAPS)



How to access the service

The General Practitioner, having determined the appropriateness of referral to the ATAPS program, need follow the following process to effect psychological assistance for the patient:

Complete the referral form 2710 *a copy is available on GP partners Adelaide website, at www.gppadelaide.org.au under the Mental Health section within the Templates tab.*

Within the 2710, specify which psychologist is required to provide ATAPS services from the listing of available consultants.

Within the 2710, indicate either the DASS 21 or K10 score

Fax the referral form 2710 through to GP partners Adelaide on 8227 2220.

Appropriate approval and a subsequent reference number will be communicated back to the GP and on to the nominated psychologist.

GP partners Adelaide can also allocate an appointment to either of the two psychologists consulting out of our premises if required.



Funded by the Department of Health and Ageing under the Better Outcomes in Mental Health Care strategy and administered by GP partners Adelaide, the objective of the funding is to support General Practitioners to deliver quality primary mental health care to their patients by assisting eligible GPs to access services from allied health professionals for their patients utilising Focussed Psychological Strategies.

GP partners Adelaide will support General Practitioners to provide early intervention optimal care and contribute to the achievement of best possible health outcomes for patients with a mental illness, by promoting evidence-based practices and recognising that good practice in mental health care includes both pharmacological and non-pharmacological interventions.

GP partners ADELAIDE

First Floor, 120 Hutt Street, Adelaide SA 5000
PO Box 7293 Hutt Street SA 5000
Phone 08 8112 1100 Fax 08 8227 2220
Email info@gppadelaide.org.au
www.gppadelaide.org.au

Clinical Psychological & Allied Health Services for Disadvantaged Patients. ATAPS Program

Patient Eligibility

The aim of the program is to target those groups who are not receiving adequate primary mental health services, including the following:

- Youth
- People with co-morbid mental health and substance use problems
- Homeless people
- Aboriginal and Torres Strait Islander peoples
- People of culturally and linguistically diverse backgrounds
- Perinatal depression
- Financially disadvantaged

Unfortunately, due to broader Australian Government policy and regulation, it is not possible to provide ATAPS services to facilities, including aged care facilities, that receive Australian Government funding for the provision of care and services to its residents.



GP Referral

It is a requirement that the referring General Practitioner prepare a Mental Health Care Plan (Referral form 2710) and an assessment to instigate a referral to an allied mental health professional for focussed psychological strategies. Focussed Psychological Strategies are defined as time-limited, evidence based psychological treatments, and include such disorders as substance use, panic, depression, sleep problems, generalised anxiety, phobic, bipolar and eating disorders, amongst others.

The patient can, on GP referral, access up to twelve (12) individual allied mental health services in a calendar year. Some limited options are available to extend this number under exceptional circumstances.

Please contact GPPA or visit our website for further information.

Patients are not to be referred for treatment through Better Access and ATAPS at the same time. Treatment through both Better Access and ATAPS may occur within one calendar year, provided the total number of individual or group services provided under both programs does not exceed the maximum allowable in a calendar year.

Service Provision

GP partners Adelaide has established a panel of qualified clinical psychologists and other allied mental health providers to provide quality psychological services under the program, including two psychologists consulting on a regular basis from the premises of GP partners Adelaide.

The listing of such providers, detailing qualifications and areas of specific interest, is available on request.

It is anticipated that no gap fee will be charged to the patient by the consulting psychologist.

The psychologist to whom the patient is referred has specific service provision requirements to fulfil, including the submission on a monthly basis of their consultation data and invoice to enable provision of de-identified activity information to be uploaded to a centralised ATAPS database.

